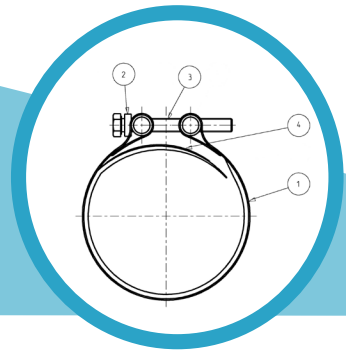


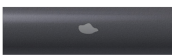
REPAIR CLAMP IVE



Components	Materials
1. Casing	1.4301
2. Bolts	1.4301
3. Bars	1.4301
4. Sealing	EPDM/NBR

- Clamp reliably seals damaged area of max. 2/3 of clamp length.
- Working pressure for repairs: DN up to 200 mm 16 bar
DN 201-500 mm 10 bar
DN above 500 mm 5 bar
- Working pressure for pipe coupling: DN up to 150 mm 10 bar
DN 151-300 mm 5 bar
- The lifespan of waffle sealing sleeve is 30 years. If the clamp is used for hot water piping where the medium temperature is up to 100 °C the sealing lifespan is max. 3 years. If used for steam piping where the air temperature is up to 130 °C sealing lifespan is reduced for 5 months.
- Different pipe diameters coupling is not possible.
- Connecting of two pipes with Maximum allowed axial misalignment for connecting of two pipes is 1% of outside diameter.

Application



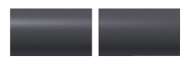
Corrosion
leakage



Cross
breakage



Lengthways
cracks

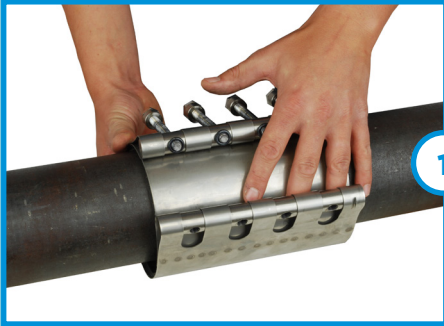


Pipe coupling

MATERIALS

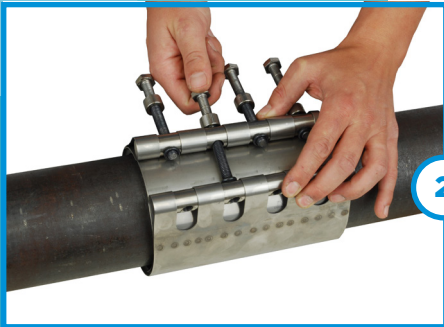
- steel • cast iron • ductile cast iron • fibrecement • PVC

FITTING INSTRUCTION



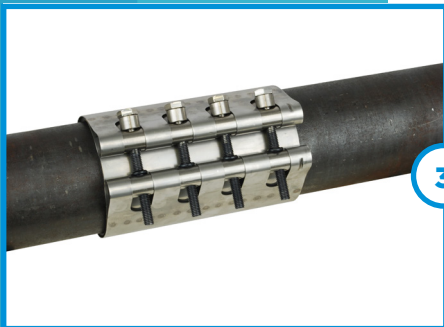
1

- Clean the pipe surface of impurities and bad coating (preferably by wire brush).
- Prepare the clamp out of workspace. Remove the plastic caps and slightly lose the lock bolts, but do not remove them completely.



2

- Fit the clamp over the pipe and ensure that the rubber sleeve is properly positioned below the casing (pic. 1).
- Centre the clamp over the pipe so the damage is situated in the middle of the clamp length and ideally opposite the lock.



3

- Press the bars together and engage the bolts into the opposite locking pin/thread. (pic. 2).
- Starting at the centre bolt, alternately tighten all lock bolts. Use the torque wrench to tighten the lock bolts to the specified torque 30-40 Nm (pic. 3).

In case of question please contact the retailer or directly the manufacturer.